



ADMISSION REQUIREMENTS FOR
FASHION DESIGN-INTERIOR DESIGN-LANDSCAPE DESIGN-GRAPHIC DESIGN

PORTFOLIO REQUIREMENTS

All applicants are required to attend an Interview / Oral Exam and Submit a portfolio along with the required university application materials to the admission office/ Interview Committee.
The portfolio must consist of three parts including:

PART 1 : WRITTEN EXPRESSION OF INTEREST:

You are required to submit an essay of 200 words, which describes your interest , knowledge and reasons for applying to a graduate program (Fashion, Interior , Landscape, Graphic Design). We strongly recommend you research and refer to current issues in the design profession and include any particular projects, periods or styles,etc., influences, designers or artists whom you feel have influenced either your artistic endeavors or your decision to pursue a career in the design discipline.

PART 2 : DRAWING

Color still life study demonstrating your use of color and composition

we suggest grouping everyday objects (such as books, fruit, small appliances, potteryetc), made of different materials (for example, plastic, wood, stone, glass, drapery, etc.) and arrange them together into an interesting composition.

Submitted Materials

- Three photos of your Composition taken from three different points of view. i.e., front, side and above
 - Sketch of your composition using a 2B pencil
 - Sketch of your composition using color such as color pencils or chalk pastel
- Both drawings should be on white paper measuring A3 size (29.7 cm x 42.0 cm).

It is essential that these drawings be created from looking at actual objects, not from your imagination and preferably not from a photograph. They must be hand drawn, not computer generated. Submissions are reviewed specifically to assess your ability to draw employing realistic and accurate depth, perspective and proportions. We also assess your representation of texture and shade and shadow.

PART 3: EXAMPLES OF YOUR VISUAL CREATIVE WORK

The Third part is a work of your choice that represents your current skills (Formatted in an A3 size). You might include a photograph of a three-dimensional object you have designed or created, drawings, Fashion illustration, painting ,a story, an article, poetry, projects of any kind, or a combination of all of these. which reflects an awareness of formal visual organizational principles and experience with a variety of tools, media, styles and approaches.

ABOUT YOUR PORTFOLIO SUBMISSION

Candidates suspected of including work done by others will be barred from admittance into BAU programs.

All submitted materials should clearly bear the applicant's name and the name of the program to which he or she is applying.

All materials submitted for Admission become the property of BAU.

Handwritten signature

EXAMPLES OF VISUAL CREATIVE WORK

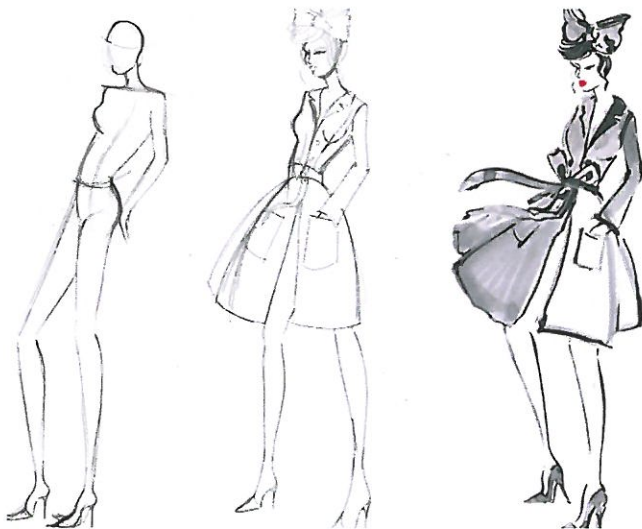
Be sure to organize your work into a cohesive presentation, labelling each item. This may be achieved by mounting all work on either landscape or portrait format stiff cardboard (black, white or grey) and by organizing it by category (3d models, ink drawings, pencil drawings, etc.) You should also label your work and include a very brief description if you think appropriate.



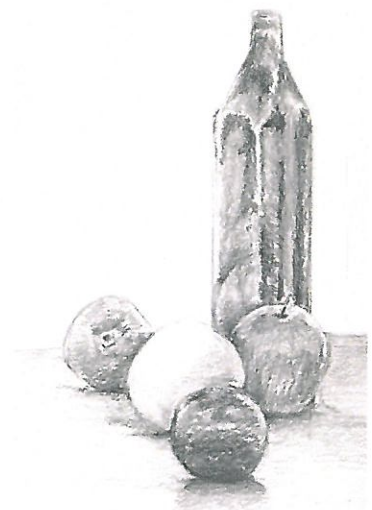
A3 Portfolio size (29.7 cm x 42.0 cm)



Composition



Fashion illustration



Composition

1.48